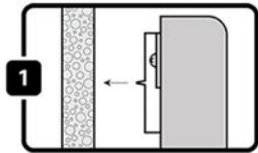


All-In-One Hanging Instructions

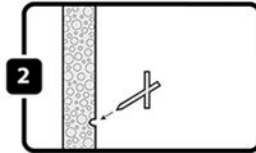
Beehive Hanger Instructions (Support Pins Included):



STEP 1:

Hold the frame up to the wall in the desired position and press against the top of the frame. Apply enough pressure so the small points on the front of the hangers mark your drywall.

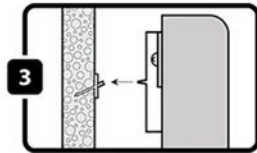
TIP: For a more noticeable mark, GENTLY jiggle the frame corners while pressing. Be sure to exercise care not to scratch your wall.



STEP 2:

Insert the long end of the support pin into the wall and press into the spot where you made your mark. Be sure to insert at a downward angle so the rectangular plate is parallel to the wall as shown. Repeat for the second support pin.

TIP: Use a tool to press in the support pin as to avoid any injuries. (Hammer, pressing tools, handles of tools, etc)

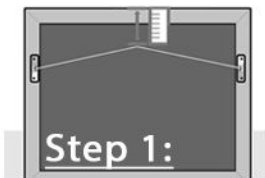


STEP 3:

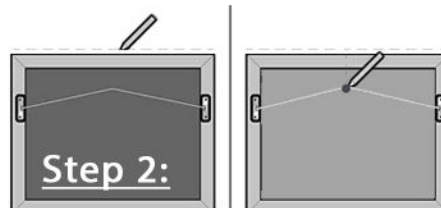
Hang your frame on the support pins. If adjustment is required, simply lift the frame from the pin(s) and reinsert into another hole in the hanger.

TIP: To ensure a straight hang, lay any level on top of the frame and slightly adjust until the level displays that it is level (i.e: Bubble is between center lines, phone level displays "0",

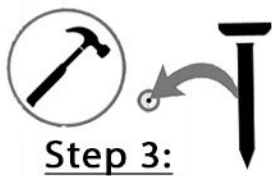
Wire Hanger Instructions (Nail(s) not Included):



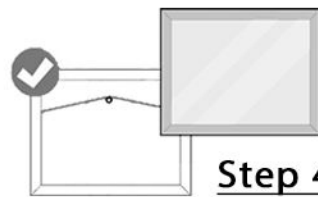
Measure the distance from the top of your artwork to the top of the wire.



Mark the place on the wall where you want the top of your artwork to sit.



Hammer the picture hook or nail into the wall.



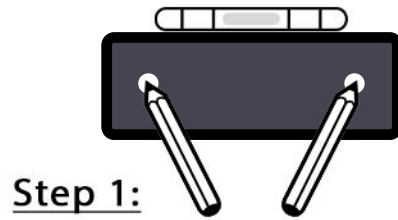
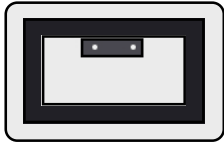
Place the wire over the edge of the hook or nail.

(Note: On larger canvas', it is recommended to use 2 nails to keep from shifting on the wall)

Sintra Back Hanging Instructions

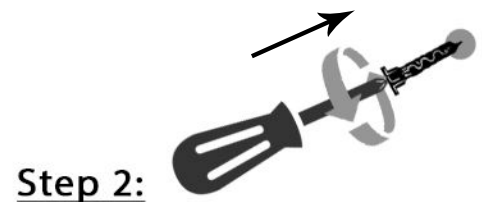
(Screw(s) and anchor(s) included):

Instructions for
Sizes 11 x 14 and above



Step 1:

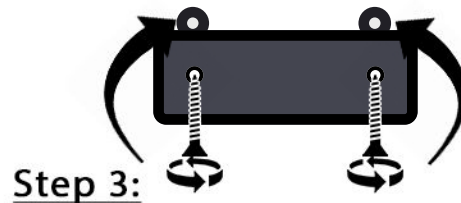
Place hanging plate in desired spot on the wall. Then, lay level on top to assure a straight hang. Mark the holes. Put aside hanging plate.



Step 2:

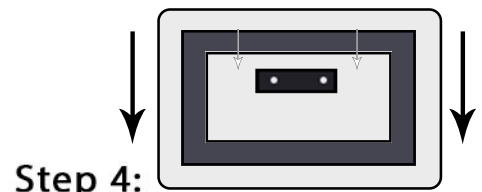
Press tip of the anchor to the mark. Using the screw driver, screw in the anchor. Repeat step for other anchors.

What You'll Need



Step 3:

Place hanging plate over the anchor openings on the wall, then screw in the screws into each anchor opening.



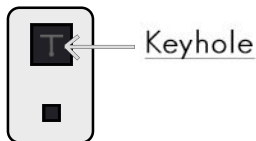
Step 4:

Hang the top rail of the frame onto the hanging plate and release. Done!

Sintra Keyhole Hanging Instructions

(Screw and anchor included):

Instructions For
Smaller Than 11 x 14



What You'll Need



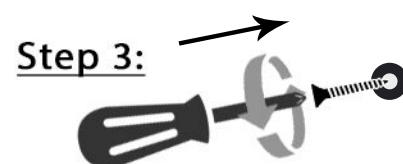
Step 1:

Mark a hole where you would like to hang the piece.



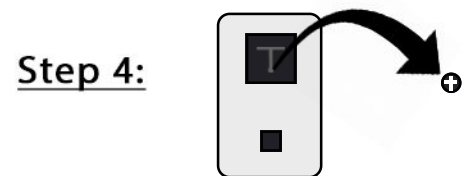
Step 2:

Press tip of the anchor to the mark. Using the screw driver, screw in the anchor.



Step 3:

Press tip of the anchor to the mark. Using the screw driver, screw in the anchor.



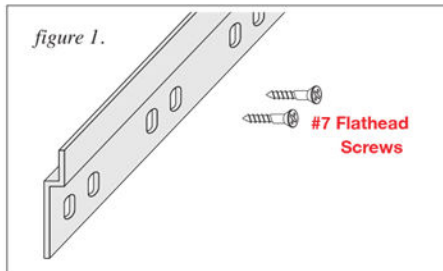
Step 4:

To hang, place the circle at the bottom of the "T" over the screw and slide down til it stops. Done!

Aluminum Back Hanging Instructions

(Screw(s) and anchor(s) NOT included):

01 / HANGING THE WALL CLEAT

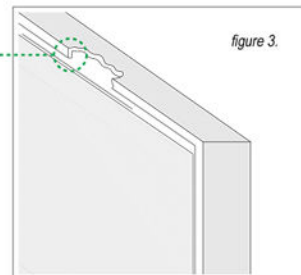
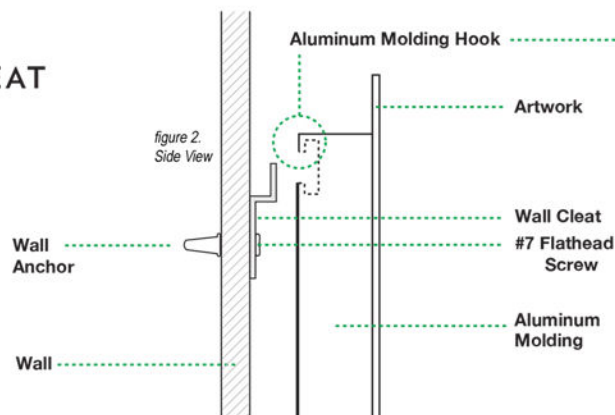


Recess Mount frames include a Wall Cleat (or more, depending on your artwork size) in the packaging to hang your artwork.

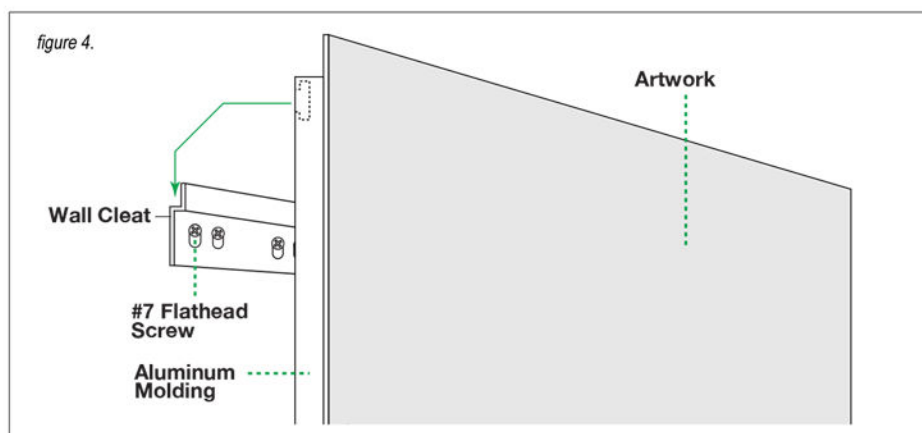
IMPORTANT

The Wall Cleat(s) should be attached to the wall via the proper #7 Flathead Screws and anchoring system.

02 / HANGING YOUR ART

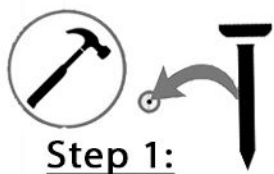


The top rear of the frame has a built in horizontal hook. This enables you to easily attach your artwork onto the wall cleat(s) once positioned to your wall.

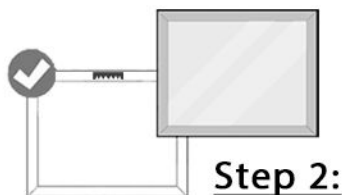


Sawtooth Hanging Instructions

(Nail(s) not included):



Hammer the picture hook or nail into the wall.



Place the sawtooth on the edge of the hook or nail. Reposition if necessary until hanging straight

